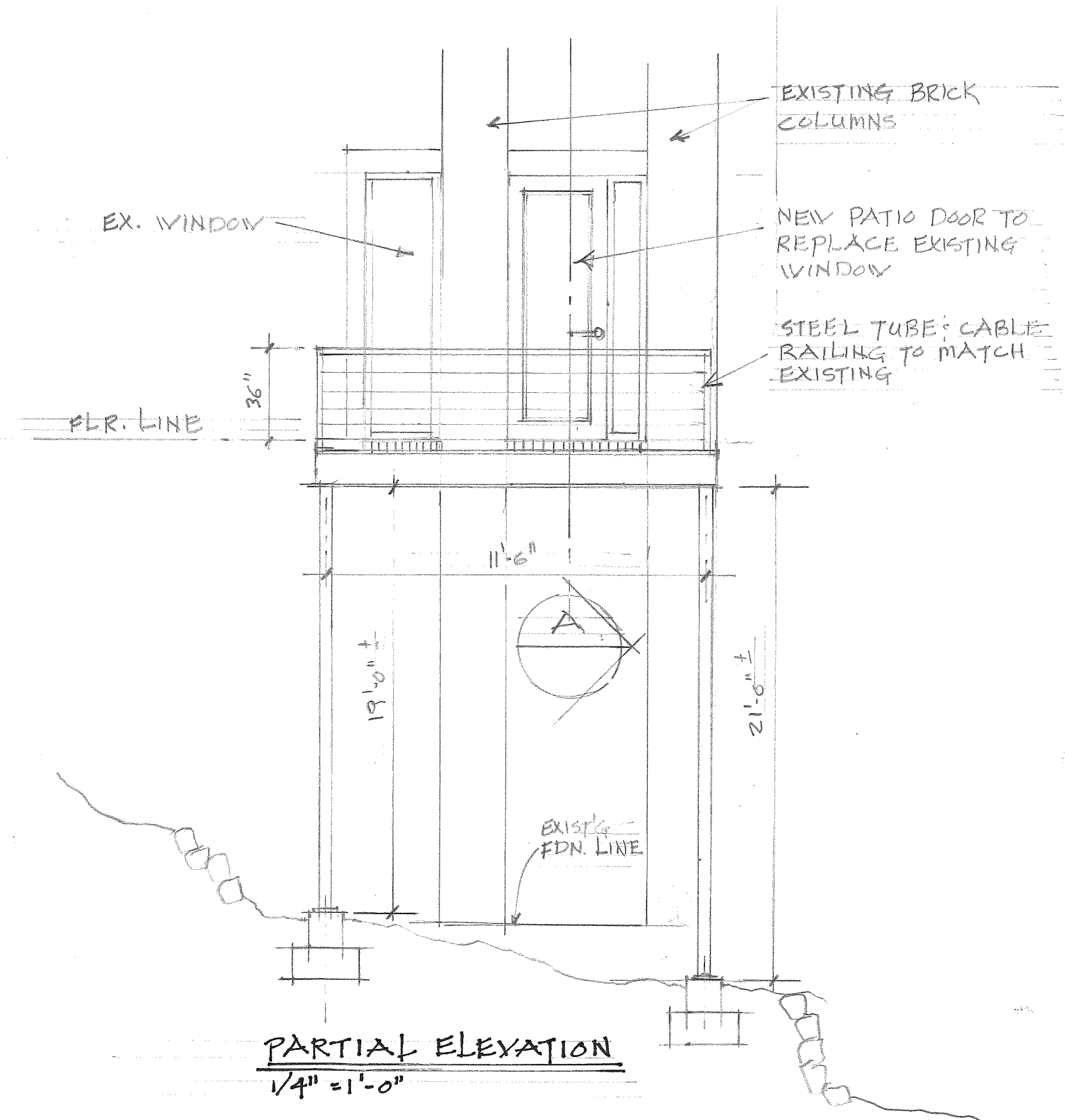


PLAN VIEW

1/4" = 1'-0"

HP. 3/10



NEW PATIO DOOR TO REPLACE
EXISTING WINDOW

CABLE RAILING SYSTEM
TO MATCH EXISTING

DECK MEMBRANE ON
5/8" EXT. GRADE SHEATHING
ON 1/2" GALV. MTL. DECKING
ON CHANNEL FRAME

STEEL TUBE COL. PAINTED

16" ϕ X 36" CONC. FTG.
ON COMPACTED SOIL

CONC. PIER: FTG.
SEE STRUCTURAL

PARTIAL SECTION

3/4" = 1'-0"

